

# SCOTSMAN


AIR, WATER, & REMOTE COOLED MODULAR CONTOUR CUBERS

50 HZ

## CME506

VOLUME PRODUCTION • 24 HOUR



 Certified & rated in accordance with ARI standard 810-95	Air-Cooled		Water-Cooled		Remote	
	70°/50° lbs./kg.	90°/70° lbs./kg.	70°/50° lbs./kg.	90°/70° lbs./kg.	70°/50° lbs./kg.	90°/70° lbs./kg.
CME506	450/204	355/161	459/208	378/171	382/173	346/157

### VALUE THE DIFFERENCE OF CM<sup>3</sup> ICE MACHINES:

- CM<sup>3</sup> series offers the lowest lifetime operating costs based on lower water and electrical usage. Combine that with a competitive purchase price and the best warranty in the industry and you have the lowest lifetime ownership cost. Period.
- AutoIQ™ Control System monitors and controls the ice machines' functions to ensure consistent ice production and reduce operating costs.
- CM<sup>3</sup> Evaporator is a hot tin dipped, molecularly bonded plate that has been field tested and proven 99.4% reliable over 5 years.
- Rust-free Polyethylene Base and Food Zone is insulated with 1-1/2" of foam which keeps water and food zone cool to reduce operating costs and is backed by a Lifetime Rust-free Warranty.
- Contemporary styling and stainless steel finish make the CM<sup>3</sup> a perfect addition to any operation.

### WARRANTY *See your dealer for complete warranty details.*

- Parts and labor on all components.
- Limited Lifetime Rust Free Warranty on Food Zone

### BIN OPTIONS:



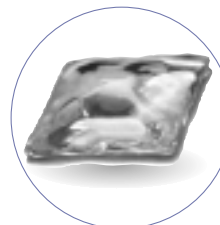
BIN: HTB250




BIN: HTB350



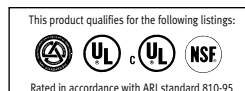
BIN: BH550



APPROX. CUBE SIZE:  
1<sup>3</sup>/<sub>8</sub>" x 1<sup>3</sup>/<sub>8</sub>" x 5<sup>5</sup>/<sub>8</sub>" THICK

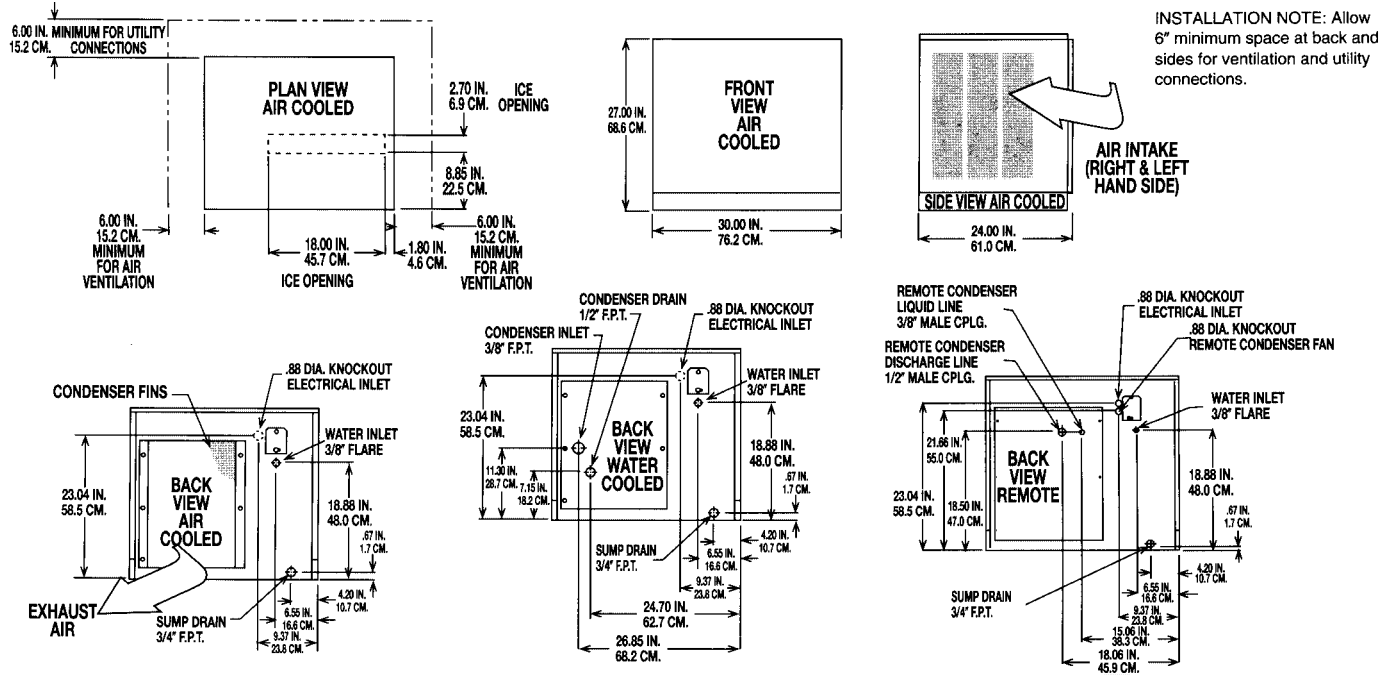
SCOTSMAN MODULAR BINS					
 Certified & rated in accordance with ARI standard 820-95					
Model Number	Dimensions W"xD"xH"	ARI Bin Capacity	Application Capacity	Finish*	Ship Weight lbs./kg.
HTB250	30 x 31.5 x 22.5	190 LBS.	250 LBS.	HTB	80/36
HTB350	30 x 31.5 x 29.5	270 LBS.	350 LBS.	HTB	90/41
HTB555	30 x 34.5 x 44.5	420 LBS.	535 LBS.	HTB	110/50
BH550	30 x 31.5 x 44	410 LBS.	520 LBS.	SS	140/64

\* (HTB) Linear Low Density Polyethylene—Grey color.  
(SS) Stainless Steel with Polyethylene liner.



**Scotsman**<sup>®</sup>  
A WELBILT<sup>®</sup> COMPANY

# CM<sup>3</sup> Ice Machine Specifications



All models: Dimensions: W x D x H Unit: 30" x 24" x 27" Shipping Carton: 33 1/2" x 28" x 32 1/2"

Model Number	Condenser Unit	Basic Electrical Volts/Hz/Phase	Max. Fuse Size or HACR Circuit Breaker	Comp. HP	Circuit Wires	Min. Circuit Ampacity	BTU's per hour	Shipping Weight lbs./kg.
CME506AS-6D	AIR	230/50/1	20	3/4	2	19	6275	205/93
CME506WS-6D	WATER	230/50/1	20	3/4	2	19	6275	195/88
CME506RS-6D	REMOTE	230/50/1	20	3/4	2	20	6275	210/95

All units with Stainless Steel finish.  
Refrigerant: R-404A.

OPTIONS:  
Stacking Kit: Number KSCME6-30 (CME256, CME506, or CME806, CME656 on CME256, CME506, CME656, or CME806).

### REMOTE CONDENSER

Dimensions: W x D x H : 29.5" x 29.15" x 38.47"

Model Number	For Use With	Cond. Unit	Finish Basic	Electrical Volts/Hz/Phase	No. of Wires	Min. Circuit Ampacity	Max Fuse Size or HACR Circuit Braker
ERC101-1A	1-CME506R	Air	Galvanized	115/60/1	2	6	15

**PRE-CHARGED REFRIGERANT TUBE KITS:** 25-Foot, RTE25 • 40-Foot, RTE40 • 75-Foot, RTE75 R-404A Refrigerant

Scotsman's ice machines are not designed for outdoor installations. Scotsman remote condensers are designed for outdoor installations.

Machine requires voltage indicated on rating name plate. Failures caused by improper voltage are not considered factory defects. Extended periods of operation at temperatures exceeding limitations constitutes misuse under the terms of Scotsman Manufacturer's Limited Warranty, resulting in a loss of warranty coverage. Specifications and design are subject to change without notice.

**Consult Your Local SCOTSMAN Representative At:**

### IMPORTANT OPERATING REQUIREMENTS:

	Minimum	Maximum
Air Temperatures	50°F (10°C)	100°F (37.7°C)
Water Temperatures	40°F (4.4°C)	100°F (37.7°C)
Remote Cond. Temps	-20°F (-28.9°C)	120°F (48.9°C)
Water Pressures	20 PSIG	120 PSIG
Electrical Voltage	-5%	+10%

**YOU'LL VALUE THE DIFFERENCE.™**

775 Corporate Woods Parkway • Vernon Hills, IL 60061 • 1-800-SCOTSMAN • (847) 913-9844  
Visit our website at: [www.scotsman-ice.com](http://www.scotsman-ice.com) • E-mail: [customer.service@scotsman-ice.com](mailto:customer.service@scotsman-ice.com)

**Scotsman**<sup>®</sup>  
A WELBILT<sup>®</sup> COMPANY